



# **Tzu Chi University 2023 (Year 112) Information for Outbound Student Exchange Program Application**

## **Purpose:**

To enhance students' communicative cross-cultural literacy, foreign language capability and expansion of globalization perspectives, Tzu Chi University (TCU) encourages our students to venture into foreign sister schools.

## **1. Application qualification:**

- (1) All undergraduate students are required to complete at least one year of study (2 semesters) at Tzu Chi University, local and international students are equally eligible
- (2) Respective language qualification certificates, depending on sister school (Japanese-Language Proficiency Test ( JLPT ) N2 level, TOEFL iBT test score of 79 and above, and IELTS test score of 6.0 and above)
- (3) Students will have had ranked in the top 50% in academic performance, excelled in volunteer service, had excellent students conduct score in school, no failing subjects, and had no major violations records in TCU.
- (4 According to "Admission by Recommendation of Tzu Chi University's Exchange Students measurements" and the rules of "Procedures for Abroad TCU Student in the Rearrangements of Study and Students status", all students planning for sister school exchange are necessary to possess the formal TCU students' status. Any prospective students that are not registered in TCU, under suspension or have graduated that applied for this exchange will not be consider in any means. Meanwhile, during the period of oversea exchange, students' status is to remain intact, no dropped out or change in student's status.
- (5) If a school has special regulations on application qualifications, those regulations will also be followed.

Remarks: When applying for a sister school, those schools will consider applicant students as exchange students, and credits taken in the sister school can be used to waive electives when travelling back to TCU. When applying to schools without a formal exchange agreement with TCU, these individual students will be considered as a research fellowship. These individuals will not go through the recommendation process and all application procedures will be self-service.

## **2. Period of exchange:**

- (1) This terms of exchange student's selection, the selected candidates are expected to start their period of exchange in 2023 for a semester or a year (two semesters), while the exact period of exchange will be scheduled on the semester calendar of the hosting sister school.
- (2) Minimum Oversea exchange period of a semester, to a maximum of a year (two semesters).



(3) Details for exchange students' quota for respective universities are in attachment 1.

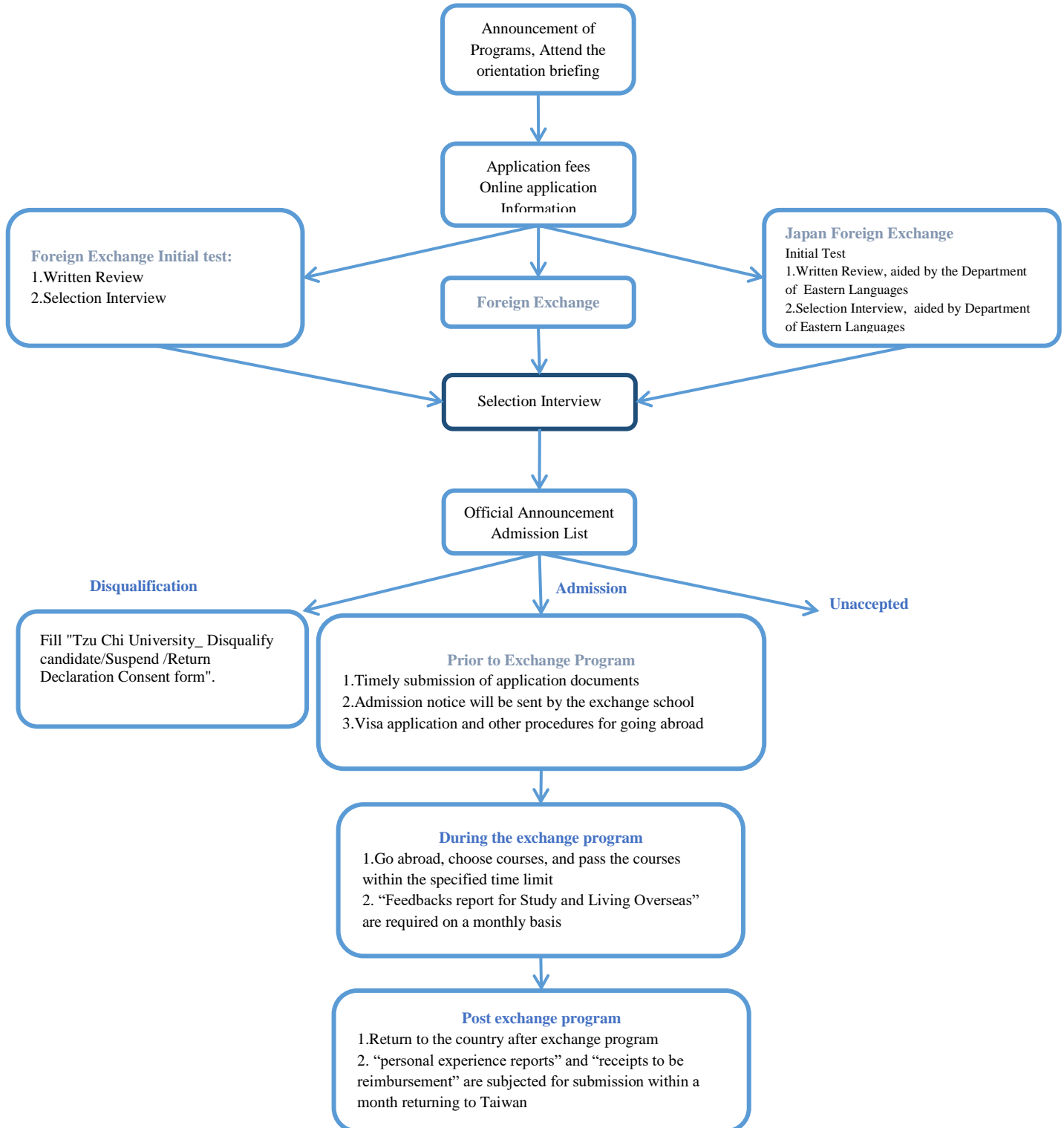
### 3. Vital schedule for the Admission by Recommendation of Exchange Students:

According to " Admission by Recommendation of Tzu Chi University's Exchange Students measurements "

Date	Events
2022.11	Announcements of the details information and started the procedure of registration
2022.11.29 (Tuesday) 18:00-19:00	Orientation– main campus Venue: Main Campus B201
<b>2023.01.07 (Saturday)</b>	Expiry date of application documents submission
TBD	<p>Initial Steps: Applying for “Foreign Exchange” Example: Department of Communication application to Thammasat University in Thailand After submitting the application materials, the students who apply for foreign exchange will be notified by OIA to conduct the preliminary examination, and the results will be examined by OIA.</p> <ol style="list-style-type: none"> <li>1. Written review of study plan</li> <li>2. Interview</li> </ol> <p>Apply for “Japan Foreign Exchange” (Any department can apply) After submitting the application materials, OIA will notify the Department of Oriental Languages to conduct the preliminary examination, and the results will be examined by OIA</p> <ol style="list-style-type: none"> <li>1. Japanese written test</li> <li>2. Japanese oral test</li> <li>3. Written review of study plan</li> </ol>
2023.1	Announcement of the selected candidates to be interviewed (interview orders and exact interview timing)
2023.2	The day of interviews * To be determined due to the fluctuation of applications number and the availability of teachers to attend the interview process. Please take note of OIA announcements.
2023.2	Official announcement of selected TCU students to exchange abroad (strictly no adjustments or replacements of candidates onwards)



#### 4. Exchange students' application flow chart:





## 5. Selection and Scoring Criteria:

(1) Scoring will be determined by country and school

### a. Stage 1: Written review score (40%)

- i. Average academic performance of the previous school year (10%)
- ii. Autobiography and study plan (10%)
- iii. English or Japanese Language proof (10%)
- iv. Other relevant information (10%) (Ex: participation in volunteer services, experience in international activities... etc.)

### b. Stage 2: Interviews (60%) (Interview languages: English, Mandarin)

- i. Study plan (20%)
  - ii. Linguistic ability (20%)
  - iii. Appearance and attitude (20%)
- c. Preliminary examination results for applying for “Foreign exchange” and “Japan Foreign Exchange”
- i. Initial test scores of Department of Communication went to Thammasat University in Thailand, Department of

## 6. Submit date: Completion of Application Before January 7<sup>th</sup> 2023 (Saturday)

(1) Checklist of Application ( 1-9 ) :

1. Application Form: <http://hk.mikecrm.com/KNd0EaV>
2. Chinese Autobiography (1000 words limit)
3. English or Japanese Autobiography (Choose according to university, 1000 word limit)
4. Study Plan (10,000 word limit, English or Chinese)
5. Academic Transcript (including GPA average and class rank)
6. Parental or Guardian Consent form
7. Letter of recommendation (Please ensure that the letter is signed after printing)
8. Photocopy of ID Card / ARC Card and Student ID Card
9. Valid Certificate of Language Proficiency
10. Other Supporting Documents (Volunteering activities, etc.)

(2) How to submit application documents

Documents must be submitted online before 2022/1/7 (Saturday)

<http://hk.mikecrm.com/KNd0EaV>

## 7. Details to be taken note in the application process:

(1) Before applying



1. Selected candidates will have to register and pay the full amount of tuition fees on TCU within the enrollment periods. As part of the sister school, no tuition fees are needed.
2. Feel free to go through the sister school official websites for any details of regarding of students' exchange activities of that particular university.
3. Before applying for exchange and go abroad, please take in consideration individual students' credits. For the part of exchange credits to be taken in sister school, students are required to confirm with TCU departments (academic departments, general education departments and physical education center) for the waiving applicability of particular credits. Students must also take at least 2 credits per semester. Individual students who have completed their exchange, will be subject to the rules of "Procedures for Abroad TCU Student in the rearrangements of Study and Students status", and must apply waivers from the respective academic departments accordingly. In the case of possible graduation delay or credit rearrangements, students are required to get confirmation with their parents, guardians and the academic administrator before applying for exchange.
4. Students are not allowed to suspend their studies during the exchange period abroad, and must still pay the full price of tuition and miscellaneous fees to the school to retain student status. If payment is not rendered in full, credits cannot be credited and any related problems are the sole responsibility of the student.
5. Due to the COVID-19 pandemic, there are a possibility that any student exchange plans are subjected to postponed or cancelled, or individual students being disqualified or exchange scheduled to be postpone. Individuals please take in great consideration before applying.

(2) Applying and selection stage

1. Please be sure to submit all required document by **1st January 2023 (Saturday)**. There will be a strict no handling policy of resubmission documents onwards.
2. Once review committees have completed the selection process and announced the result of exchange admissions, to-be-exchange candidates are prohibited under any circumstances to request for sister schools' reselection, or attempt to renegotiate with other candidates in modifying the results of exchange schools' distribution. Any attempt will be considered as voluntarily giving up their secured nomination.

(3) Post TCU interview selection

1. All students who have passed TCU admission by recommendation selection, will again have to go through the reviews of that particular exchange school. **The hosting exchange school will be the one to decide the students they are going to admit.**
2. **The admission qualification of each exchange school required an official "Admission notice" released by the school.** This notice will represent the



official acceptance letter to proceed with travelling abroad procedures.

Admission registration of each exchange school, will individually notify the prospective exchange students.

3. Individual matters such as visa application, exchange school course selection, credits recognition, flight ticket and health insurance, will all be handled by the individual student personally.
4. Some exchange schools may not guarantee the availability of school dormitories. Under these circumstances, sister schools will provide some basic housing information. Admitted students will be responsible for their own accommodation
5. Students who attempt to terminate their exchange in prior, will have to return to TCU within a month. Any decision of termination will require the student to inform TCU Office of international affair (TCU), as well as the International and Cross-Strait Affairs Office.
6. Disqualified candidate are required to fill up "Tzu Chi University Disqualify candidate/Suspend /Return Declaration Consent form".
7. Exchange students' scholarship: Qualified individuals who are selected for international exchange, are eligible for TCU international academic exchange grant (國際學術交流獎補助金) or the Ministry of Education Xue-hai-fei-yang Scholarship (學海飛颺獎). TCU students with nationality of non Republic of China, oversea Chinese and students applying for exchange in China, Hong Kong and Macao are not eligible for applying for Ministry of Education scholarships.'
8. For relevant scholarship subsidies, please refer to the "Tzu Chi University's Handling of the Ministry of Education's Learning Overseas Series Subsidy Operation Key Points", "Tzu Chi University Students' Overseas Exchange Subsidy Measures", and "Students' Overseas Short-term Study Abroad Course Subsidy Measures".

(4) Documents to be submitted during the exchange and training period

1. During the process of leaving Taiwan, boarding pass must be submitted electronically to OIA.
2. Upload "Tzu Chi University Study Abroad Arrival Report" **within 7days of arrival** in the Host University.
3. Throughout the exchange period, reports of **"Feedbacks report for Study and Living Overseas"** and **"Interactive Photo and Video with Locals"** are to be submitted to TCU OIA on a monthly basis.
4. Once the exchange students have return to Taiwan, **"Individual report"**, **"return boarding pass"**, **"receipts to be reimbursement"**, and **"Exchange**



慈濟大學國際暨兩岸事務處

Tzu Chi University · Office of International Affairs

**student verification document checklist**” are to be submitted to OIA within a month of return.

5. Exchange students will subject to attend the student exchange orientation of the following term, as a mean to share personal exchange experience. In future, assistance for the foreign students arriving from TCU sister schools will be encouraged, in order to accommodate and accompany them during the process of adapting in a new environment.

**8. Contact person: for more information, please contact OIA Ms Chen**

Office: Main Campus A207

Contact: 03-8565301 ext 1014

Email: [chieni@gms.tcu.edu.tw](mailto:chieni@gms.tcu.edu.tw)



Attachment 1: 2023 Global TCU Sister Schools open for application in 2023

Country	University	Seats	Language Proficiency/ GPA	Spring Admission Period	Autumn Admission Period	Availability	Remarks
USA	California State University Channel Islands	2	1 Average GPA: 2.5 or more 2. English Proficiency : -TOEFL Internet-based 61 -IELTS 6.0 -DAAD B or better -Eiken Pre-1	1-5 Months	8-12 Months	Undergraduate	Free tuition, self-settlement of accommodation
	<a href="https://www.csuci.edu/">https://www.csuci.edu/</a>						
USA	Kansas State University	N/A	English Proficiency: TOEFL79 Or IELTS6.5 (TOEFL score is or above 79 or your IELTS score is 6.5 or higher, we will waive the requirement for English classes.)	1-5 Months	8-12 Months	Undergraduate, Graduate	Free tuition, self-settlement of accommodation <b>*Limited to Medical Students and International Students</b>
	<a href="https://www.k-state.edu/">https://www.k-state.edu/</a>						
Canada	Humber College	2	English	1-4 Months	8-12 Months	Undergraduate	Free tuition, self-settlement of accommodation
<a href="https://humber.ca/">https://humber.ca/</a>							
Sweden	Halmstad University	2	English	1-6 Months	9-1 Months	Undergraduate, Graduate	Free tuition, self-settlement of accommodation
<a href="https://www.hh.se/english.html">https://www.hh.se/english.html</a>							
Thailand	University of Duisburg-Essen	2	Basic German, English	4-7 Months	10-2 Months	Undergraduate, Graduate	Free tuition, self-settlement of accommodation
<a href="https://www.uni-due.de/en/">https://www.uni-due.de/en/</a>							





Country	University	Seats	Language Proficiency/ GPA	Spring Admission Period	Autumn Admission Period	Availability	Remarks
	West Saxon University of Applied Sciences of Zwickau	2	Basic German, English	4-7 Months	10-2 Months	Undergraduate, Graduate	Free tuition, self-settlement of accommodation
				<a href="https://www.fh-zwickau.de/english/university/welcomecontact/">https://www.fh-zwickau.de/english/university/welcomecontact/</a>			
China	Lanzhou University	3	Mandarin	2-6 Months	8-1 Months	Undergraduate	Free tuition and accommodation
				<a href="https://www.lzu.edu.cn/">https://www.lzu.edu.cn/</a>			
	Nanjing University	5	Mandarin	2-6 Months	9-1 Months	Undergraduate, Graduate	Free tuition, self-settlement of accommodation * <b>Only students with household registration in Taiwan, Hong Kong, and Macau are eligible for exchange</b>
				<a href="https://www.nju.edu.cn/main.htm">https://www.nju.edu.cn/main.htm</a>			
	Soochow University	2	Mandarin	2-6 Months	9-1 Months	Undergraduate	Free tuition, self-settlement of accommodation
				<a href="https://www.suda.edu.cn/">https://www.suda.edu.cn/</a>			
Korea	Busan University of Foreign Studies	3	Basic Korean, English	3-7 Months	8-2 Months	Undergraduate, Graduate	Free tuition, self-settlement of accommodation
				<a href="https://eng.bufs.ac.kr/eng/">https://eng.bufs.ac.kr/eng/</a>			
	Dongseo University	2	Basic Korean, English	3-7 Months	8-2 Months	Undergraduate, Graduate	Free tuition, self-settlement of accommodation
				<a href="https://uni.dongseo.ac.kr/eng/">https://uni.dongseo.ac.kr/eng/</a>			
	Dongguk University	2	Basic Korean, English	3-7 Months	8-2 Months	Undergraduate	Free tuition, self-settlement of accommodation
				<a href="https://www.dongguk.edu/eng/main">https://www.dongguk.edu/eng/main</a>			
	Yeungnam University	2	Basic Korean, English	3-7 Months	8-2 Months	Undergraduate	Free tuition, self-settlement of accommodation
				<a href="https://homep.yu.ac.kr/en/main/index.php">https://homep.yu.ac.kr/en/main/index.php</a>			
Malaysia	Universiti Tunku Abdul Rahman	5	Mandarin, English	One school year has three semesters January: January- May May : May-October October : October- November		Undergraduate, Graduate	Free tuition, self-settlement of accommodation



Country	University	Seats	Language Proficiency/ GPA	Spring Admission Period	Autumn Admission Period	Availability	Remarks
		<a href="https://www.utar.edu.my/">https://www.utar.edu.my/</a>					
Thailand	Chiang Mai University	2	- TOEFL (paper based) 500 / (computer based) 173 / (iBT) 61 - IELTS 5 - TOEIC 600	6-10 Months	11-4 Months	Undergraduate, Graduate	Free tuition, self-settlement of accommodation
		<a href="https://www.cmu.ac.th/en/">https://www.cmu.ac.th/en/</a>					
	Naresuan University	4	English	6-10 Months	11-4 Months	大學部、研究所	Free tuition and accommodation
		<a href="https://english.nu.ac.th/">https://english.nu.ac.th/</a>					

Country	University	Seats	Language Proficiency/ GPA	Spring Admission Period	Autumn Admission Period	Availability	Remarks
Japan	Bukkyo University	2	Japanese	4-7 Months	9-1 Months	Undergraduate	Free tuition and accommodation
		<a href="https://www.bukkyo-u.ac.jp/english/">https://www.bukkyo-u.ac.jp/english/</a>					
	Tenri University	1	Japanese	4-7 Months	9-1 Months	Undergraduate	Free tuition and accommodation
		<a href="https://www.tenri-u.ac.jp/en/">https://www.tenri-u.ac.jp/en/</a>					
	Shokei University	2	Japanese	4-7 Months	9-1 Months	Undergraduate	Free tuition and accommodation <b>(Limited to female students)</b>
		<a href="https://www.shokei-gakuen.ac.jp/univ/">https://www.shokei-gakuen.ac.jp/univ/</a>					
	Aichi Gakuin University	2	Japanese or English(This university has an international college)	4-7 Months	9-1 Months	Undergraduate	Free tuition, self-settlement of accommodation
		<a href="https://www.agu.ac.jp/english/">https://www.agu.ac.jp/english/</a>					

Department	Country	University	Seats	Language Proficiency/ GPA	Spring Admission Period	Autumn Admission Period	Availability	Remarks
Department of Communication	Thailand	Thammasat University	2	English	1-5 Months	8-12 Months	Undergraduate	Free tuition, self-settlement of accommodation <b>(Courses will be taught in English)</b>



Department	Country	University	Seats	Language Proficiency/ GPA	Spring Admission Period	Autumn Admission Period	Availability	Remarks
			<a href="https://tu.ac.th/en">https://tu.ac.th/en</a>					
Department of Child Development and Family Studies	Malaysia	Universiti Tunku Abdul Rahman	5	Mandarin, English	One school year has three semesters January: January- May May : May-October October : October-November		Undergraduate	Free tuition, self-settlement of accommodation
<a href="https://www.utar.edu.my/">https://www.utar.edu.my/</a>								